

FX5-422-BD-GOT

對北爾人機連線手順

欲使用FX5-422-BD-GOT之MC Protocol機能,
請先確認下述事項:

1.FX5主機的韌體版本須為1.310

(主機製造序號為17X****後方可使用此機能

※FX5UC-32MT/DS-TS, FX5UC-32MT/DSS-TS主機序號為178****後)

■ ファームウェアバージョン1.300→1.310への改善履歴 (2024/4)

CPUユニットの製造番号が「17X****」以降から使用可能です。

※FX5UC-32MT/DS-TSおよびFX5UC-32MT/DSS-TSは、製造番号が「178****」以降

No.	内容	ファームウェアバージョン
1	FX5-422-BD-GOTのプロトコル形式に「MCプロトコル」を追加しました。	1.310

2.GX Works3 版本須為1.105K後

iQ-Fシリーズの"ユニットパラメータ-拡張ボード"において、FX5-422-BD-GOTを選択したときに、"プロトコル形式"からMCプロトコルを設定できるように改善しました。

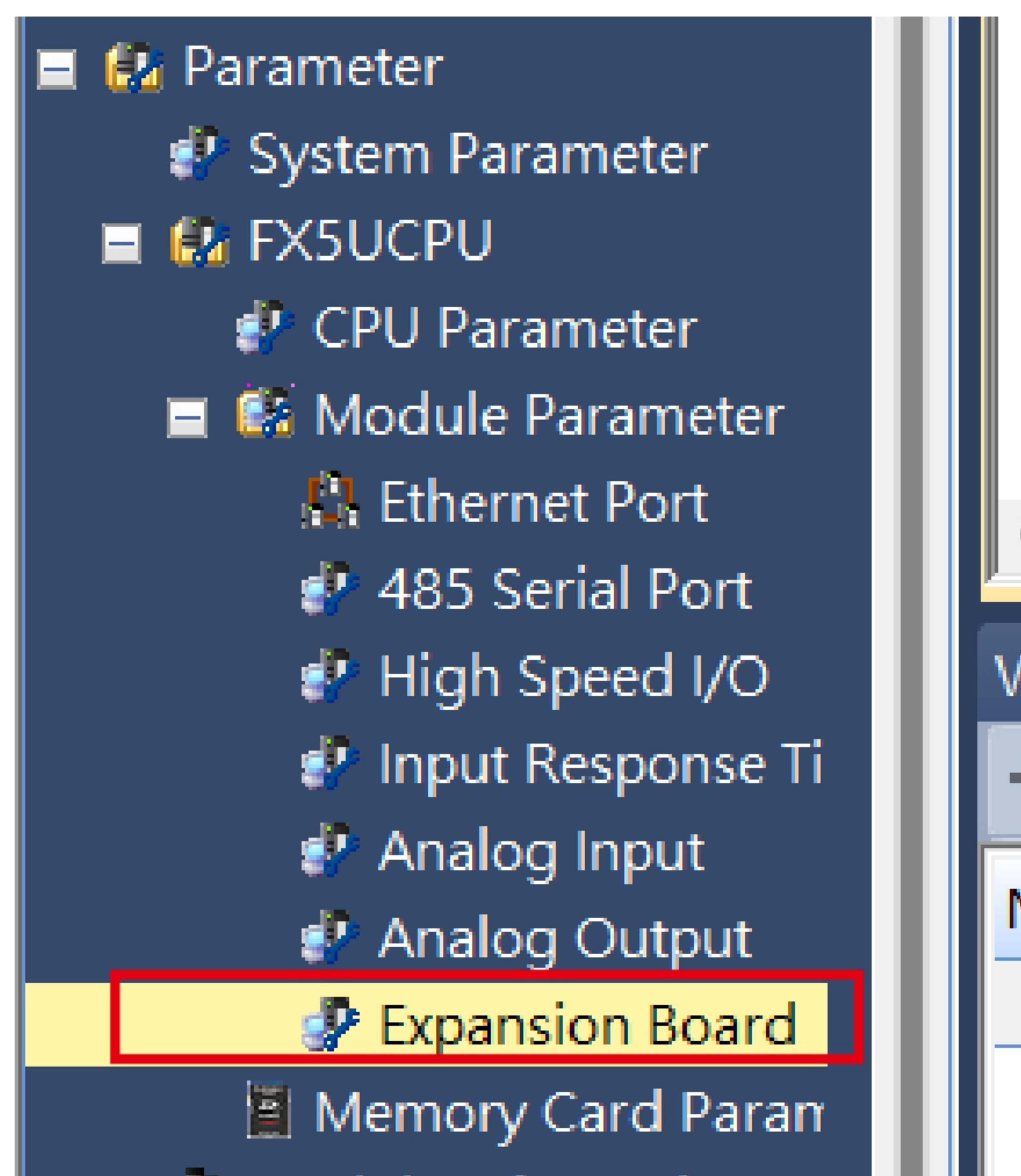
機能追加

上述版本請先至日本三菱電機FA官方網站下載更新:



1.開啟GX Works3

2.開啟[Parameter]->[FX5**CPU]->[Module Parameter]->[Expansion Board]



3. 擴充板設定為422-BD-GOT。

Setting Item	
Item	
<input type="checkbox"/> Expansion Board	Set the extension board type.
<i>Expansion Board</i>	None
<input type="checkbox"/> Communication Protocol Type	None
Communication Protocol Type	FX5-232-BD
	FX5-485-BD
	FX5-422-BD-GOT

4.選擇通訊格式為[MC Protocol]。

Setting Item	
Item	
<input type="checkbox"/> Expansion Board	Set the extension board type.
Expansion Board	FX5-422-BD-GOT
<input type="checkbox"/> Communication Protocol Type	Set communication protocol type.
<i>Communication Protocol Type</i>	MELSOFT Connection
	MELSOFT Connection
	MC Protocol

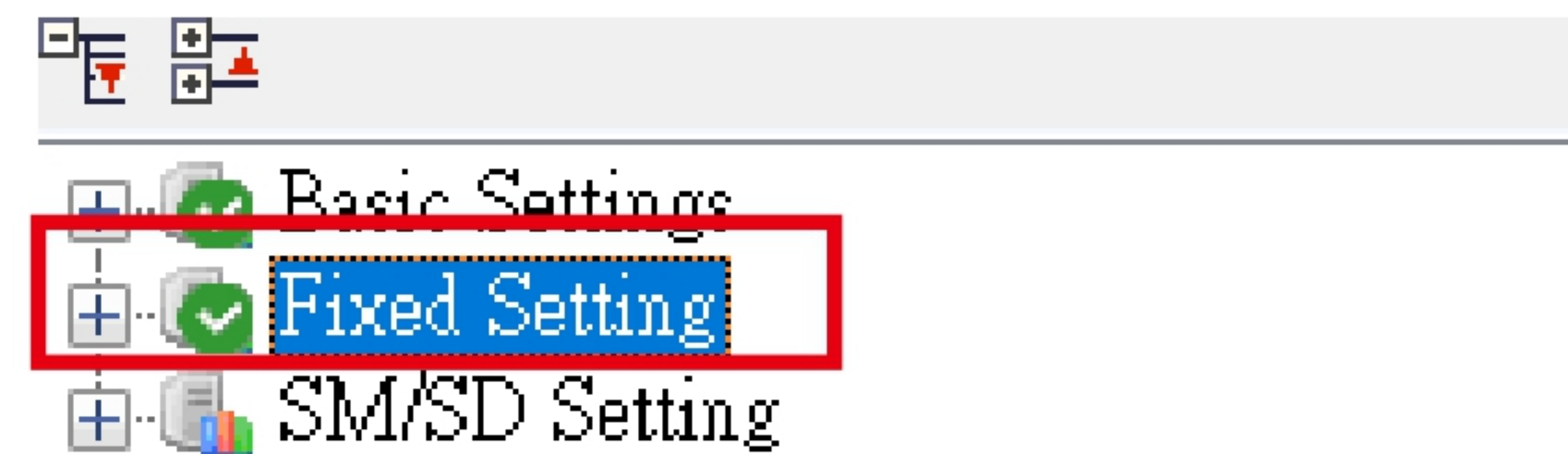
5.請將Sum Check Code開啟為[Added]。

Advanced Settings	Set detailed setting.
Data Length	7bit
Parity Bit	None
Stop Bit	1bit
Baud Rate	9,600bps
Sum Check Code	Added

6.再依需求設定資料長度、奇偶校驗須為None、停止位元及鮑率。

Advanced Settings	Set detailed setting.
Data Length	7bit
Parity Bit	None
Stop Bit	1bit
Baud Rate	9,600bps
Sum Check Code	Added

7. 接著切換到[Fixed Setting]表單。



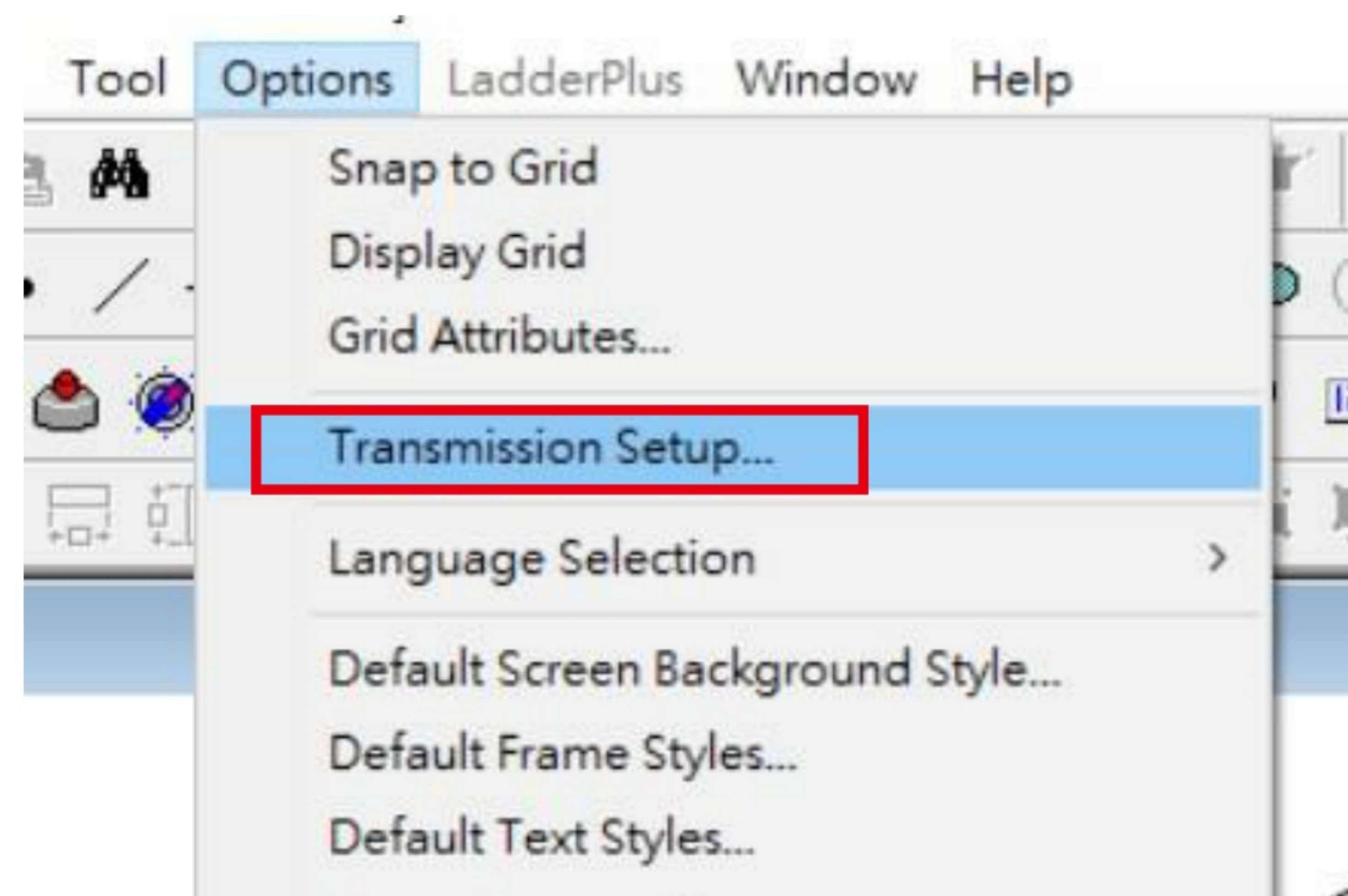
8. 請將Message Pattern設定為[Pattern 1(X,Y OCT)]。

Setting Item	
Item	
Station No.	Set the station No. of the PLC.
Station No.	0
Message Pattern	Set the MC Protocol message pattern.
Message Pattern	Pattern 1 (X, Y OCT)
Time-out Period	Set time-out period.
Time-out Period	100 ms
Message Waiting Time	Set a waiting time for a response message.
Message Waiting Time	0 ms

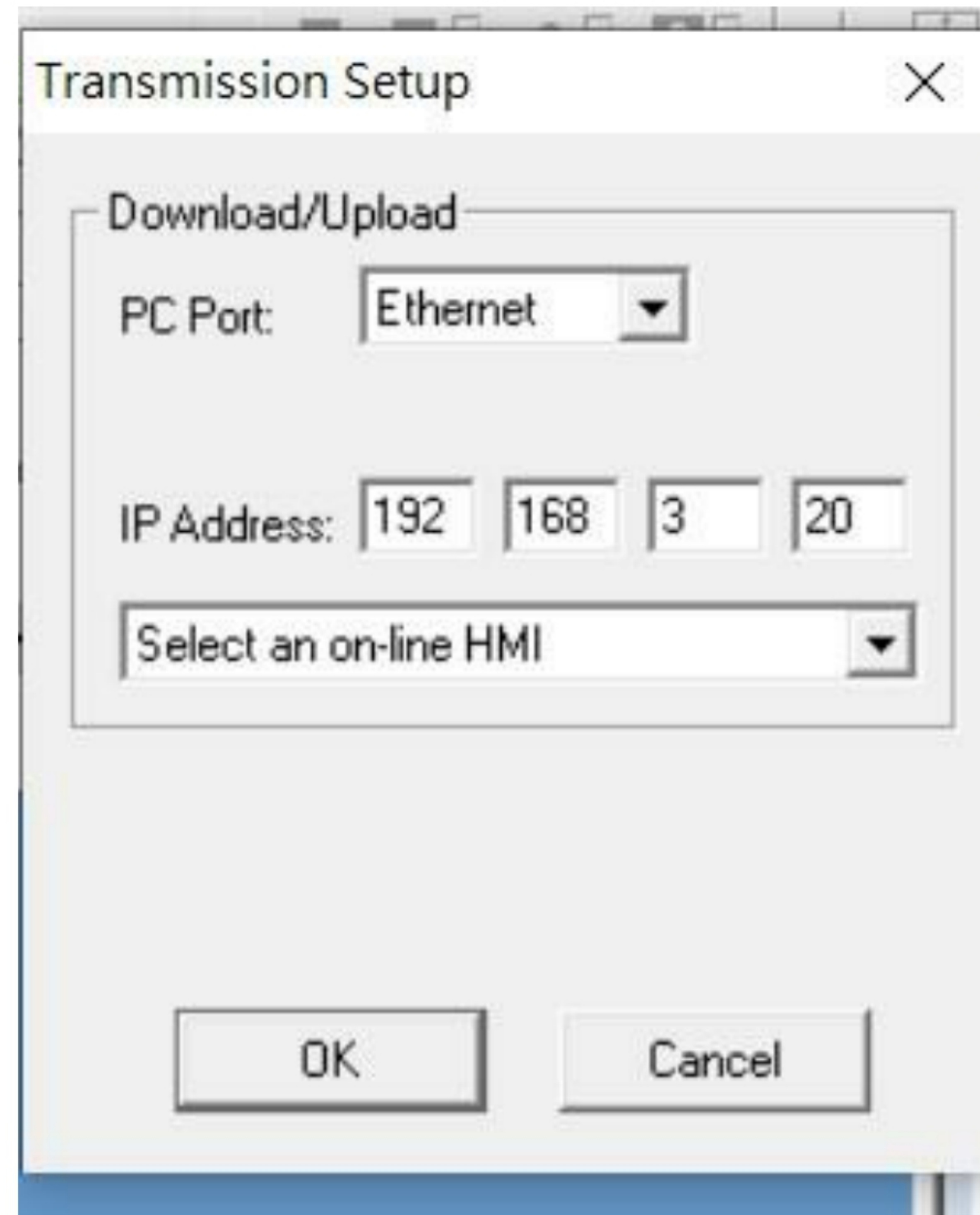
8.傳輸過程如因傳輸效率導致FX5出現異常警示,可透過調整[Message Waiting Time]及[Time-out Period]。

Setting Item	
Item	
<input type="checkbox"/> Station No.	Set the station No. of the PLC.
Station No.	0
<input type="checkbox"/> Message Pattern	Set the MC Protocol message pattern.
Message Pattern	Pattern 1 (X, Y OCT)
<input type="checkbox"/> Time-out Period	Set time-out period.
Time-out Period	100 ms
<input type="checkbox"/> Message Waiting Time	Set a waiting time for a response message.
Message Waiting Time	0 ms

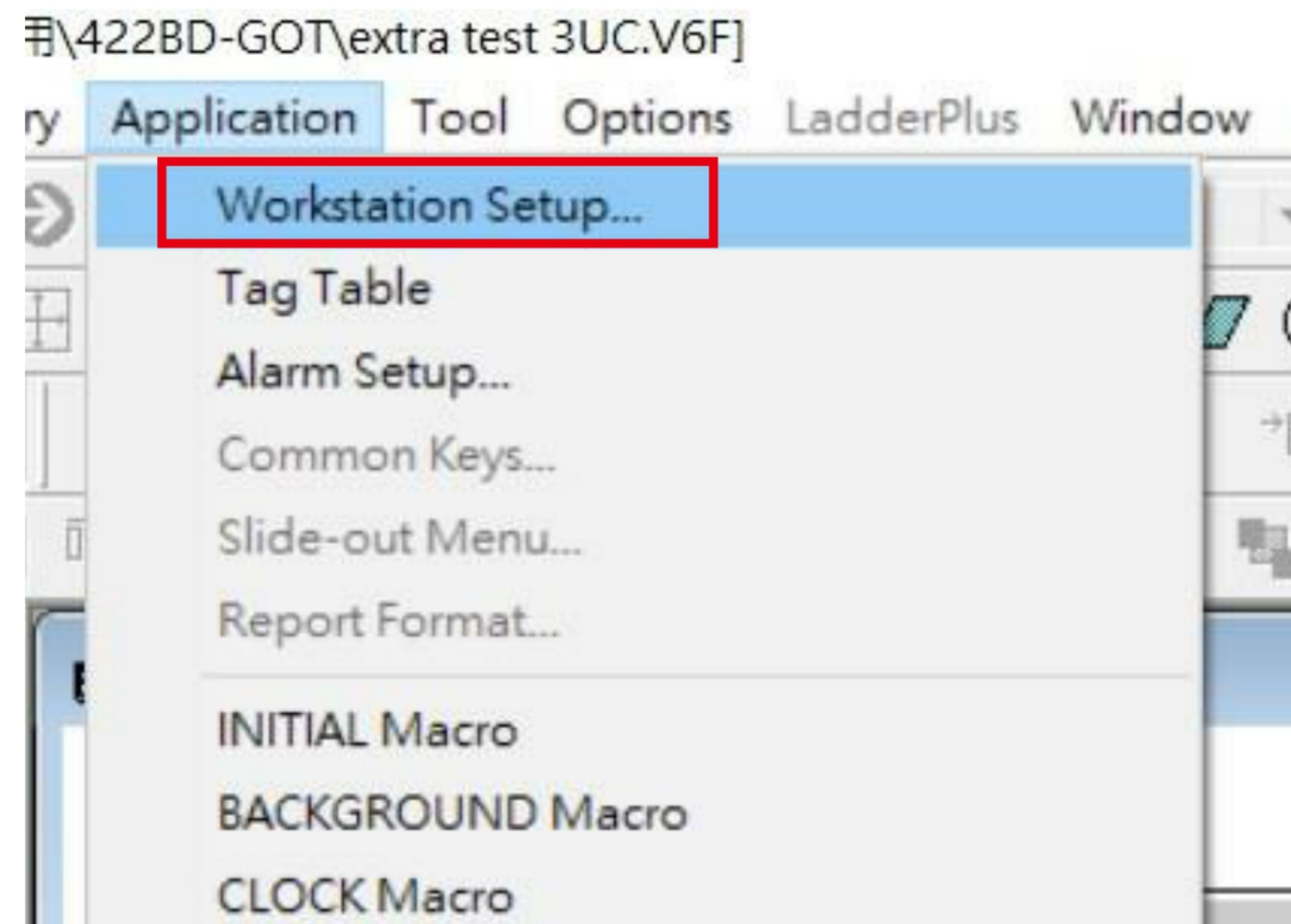
- 1.開啟ADP軟體。
- 2.[Option]->[Transmission]設定PC與HMI的通訊設定。



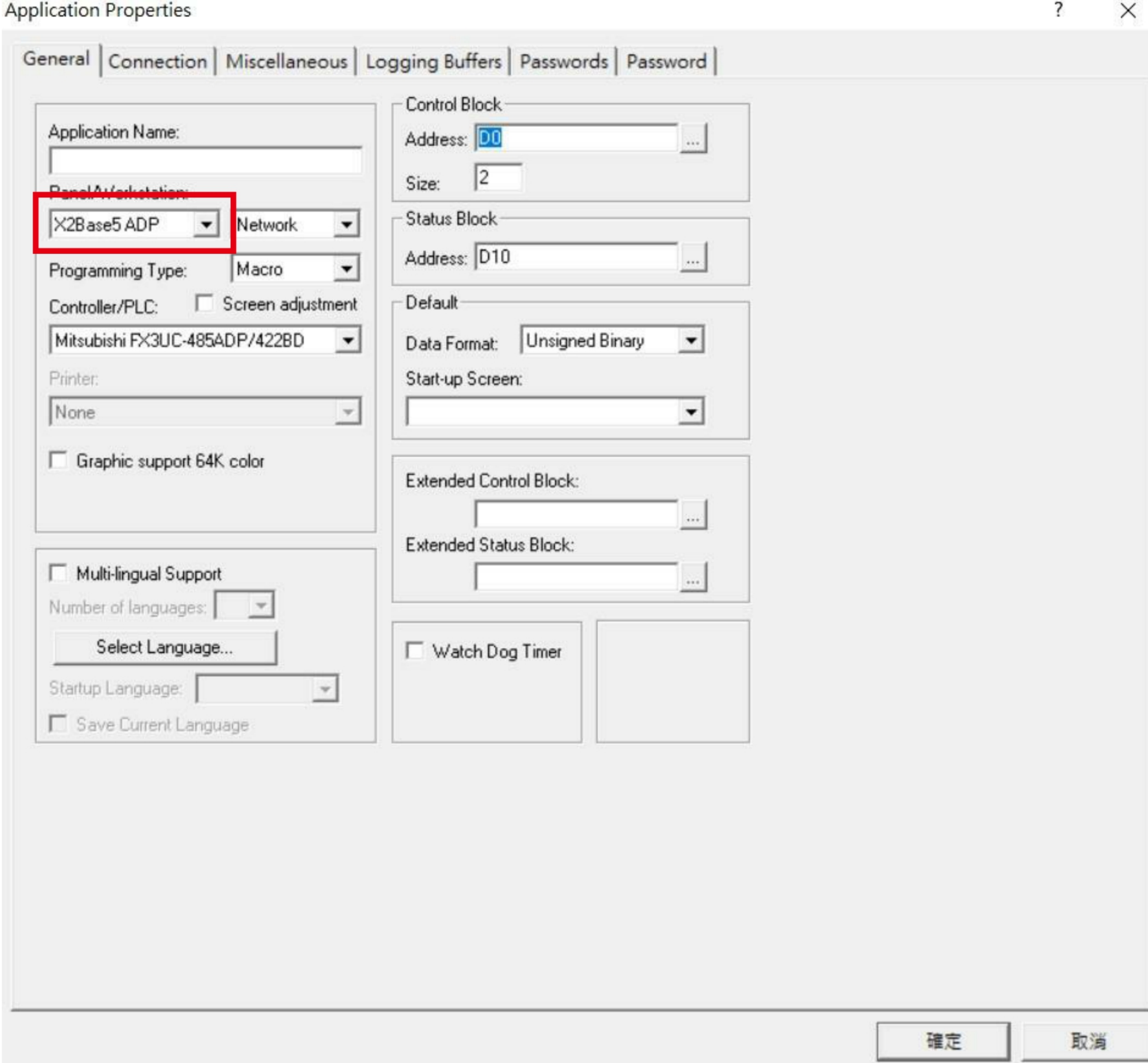
3.請設定連線目標的连接方式及IP Address。



4.選擇[Application]->[Workstation Setup]來進入人機的通訊格式設定。



5. 選擇所要連接的HMI型號。



Application Properties

General | Connection | Miscellaneous | Logging Buffers | Passwords | Password

Application Name:

Panel/Workstation:

X2Base5 ADP Network

Programming Type: Macro

Controller/PLC: Screen adjustment
Mitsubishi FX3UC-485ADP/422BD

Printer: None

Graphic support 64K color

Multi-lingual Support
Number of languages:
Select Language...
Startup Language:
 Save Current Language

Control Block
Address: D0
Size: 2

Status Block
Address: D10

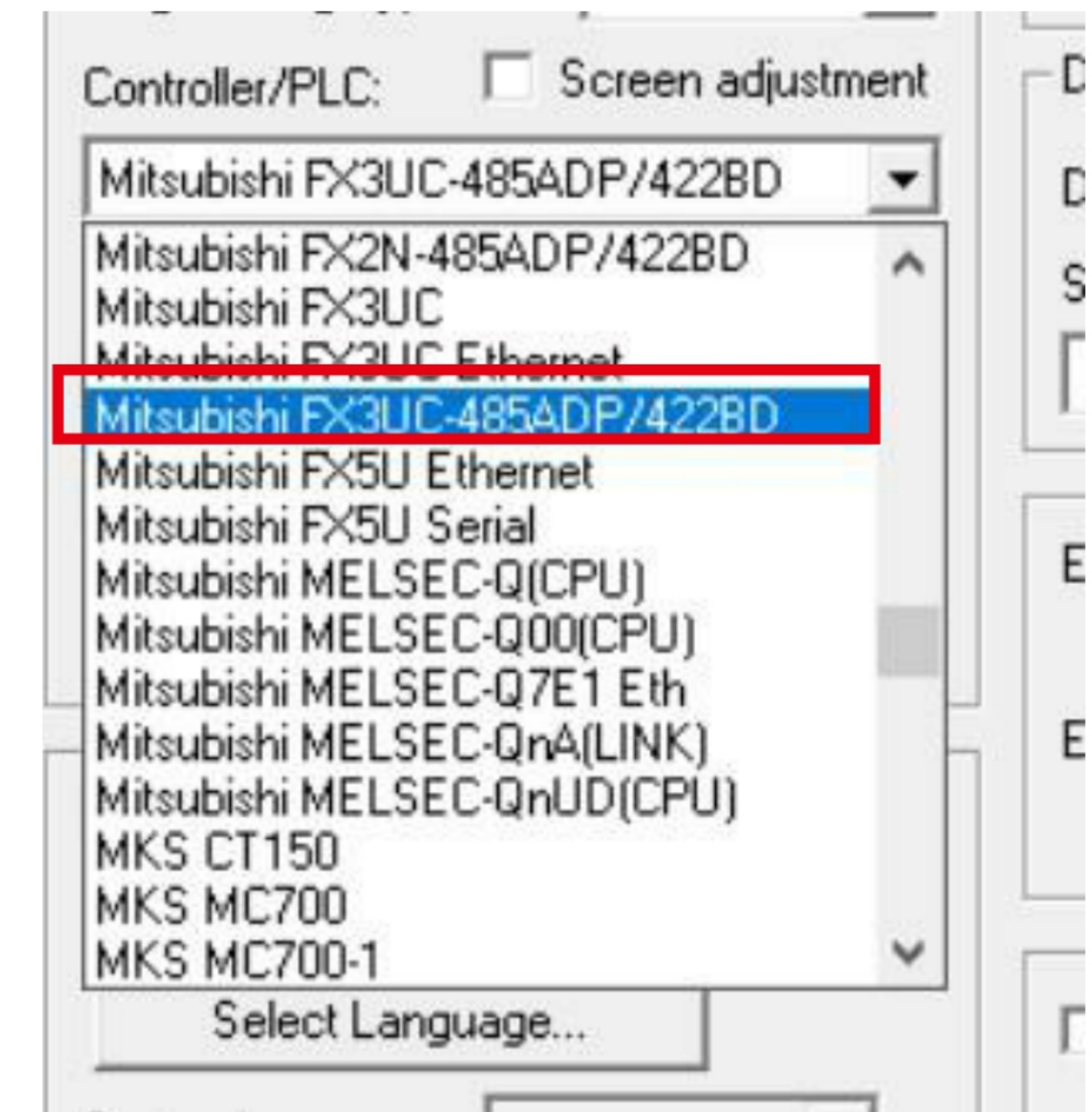
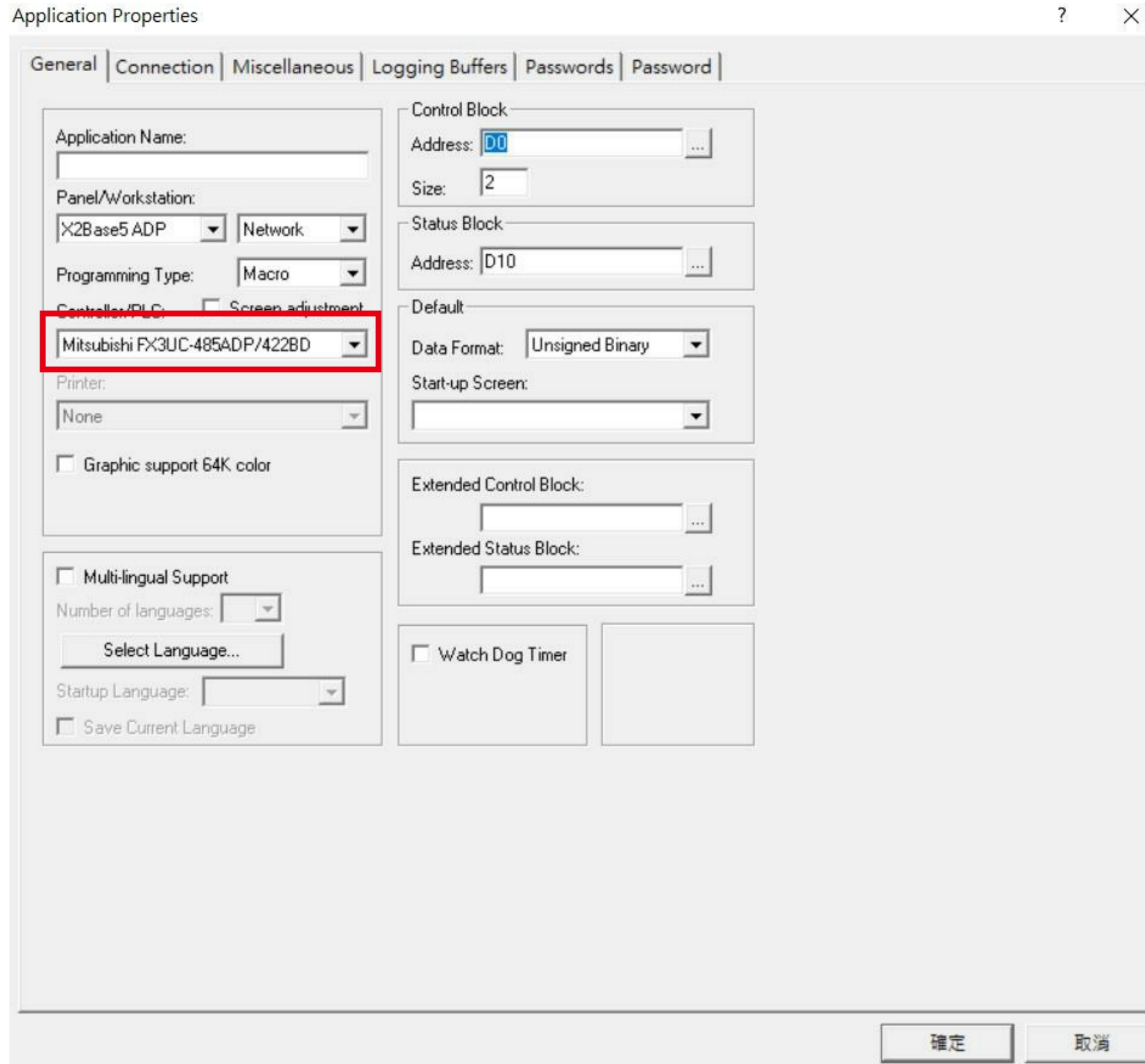
Default
Data Format: Unsigned Binary
Start-up Screen:

Extended Control Block:
Extended Status Block:

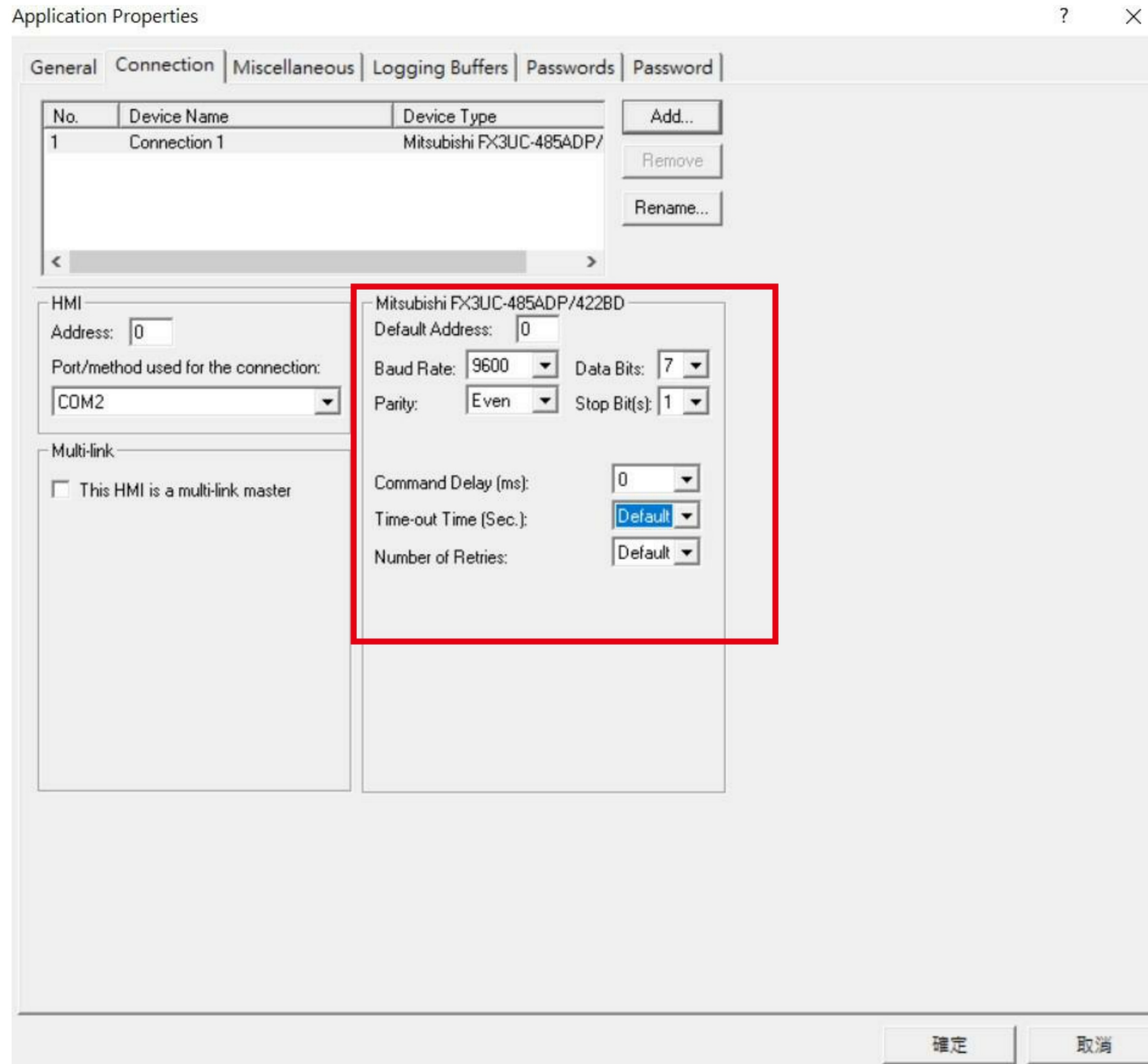
Watch Dog Timer

確定 取消

6.請選擇通訊Drive為[Mitsubishi FX3UC-485ADP/422BD]



7. 切換至[Connection]頁籤並設定相關通訊參數, 依據傳輸需求及狀況可自行調整 Command Delay, Time-out Time及Number of Retries。



通訊參數

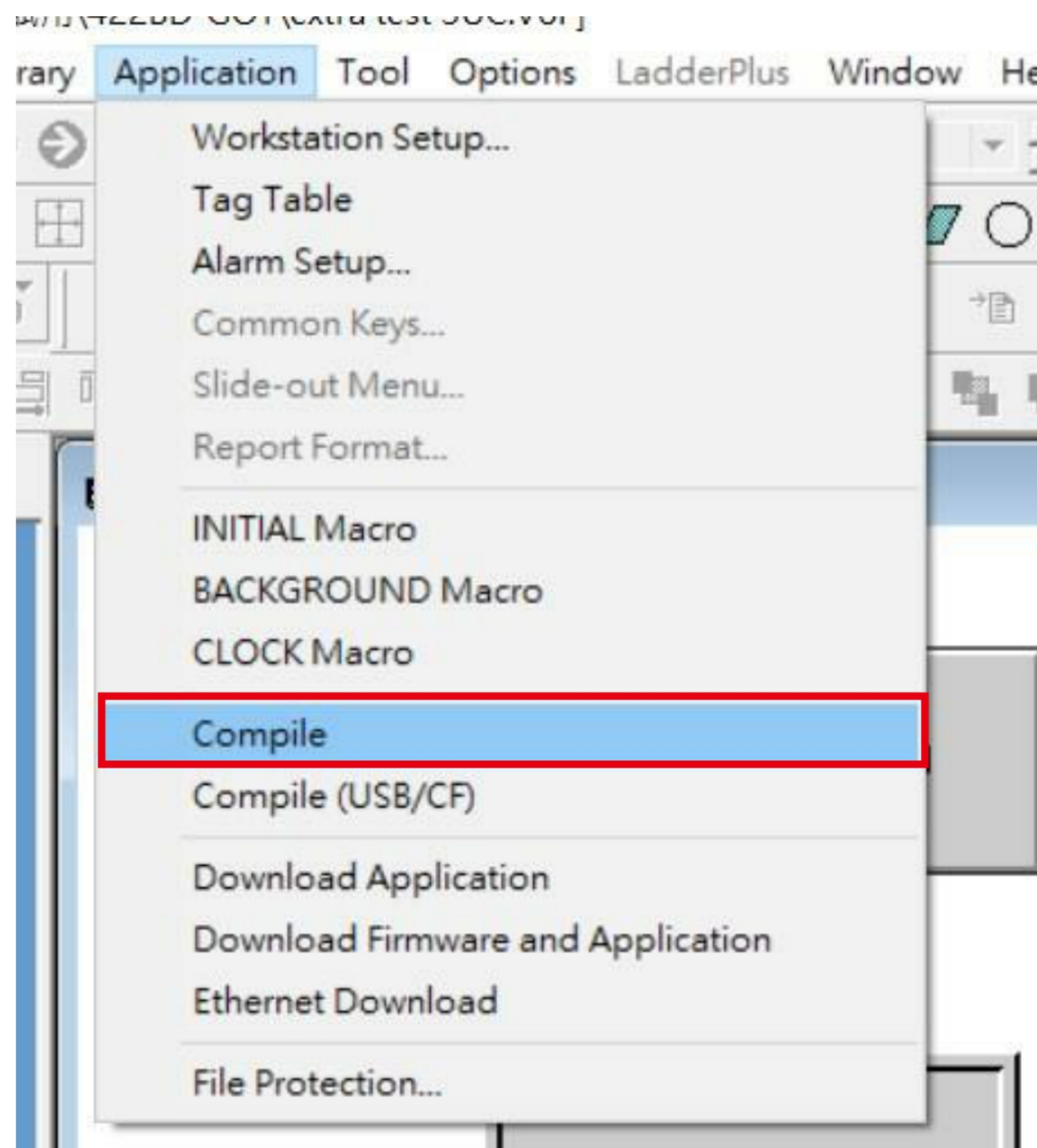
Baud Rate: 9600

Data Bit:7

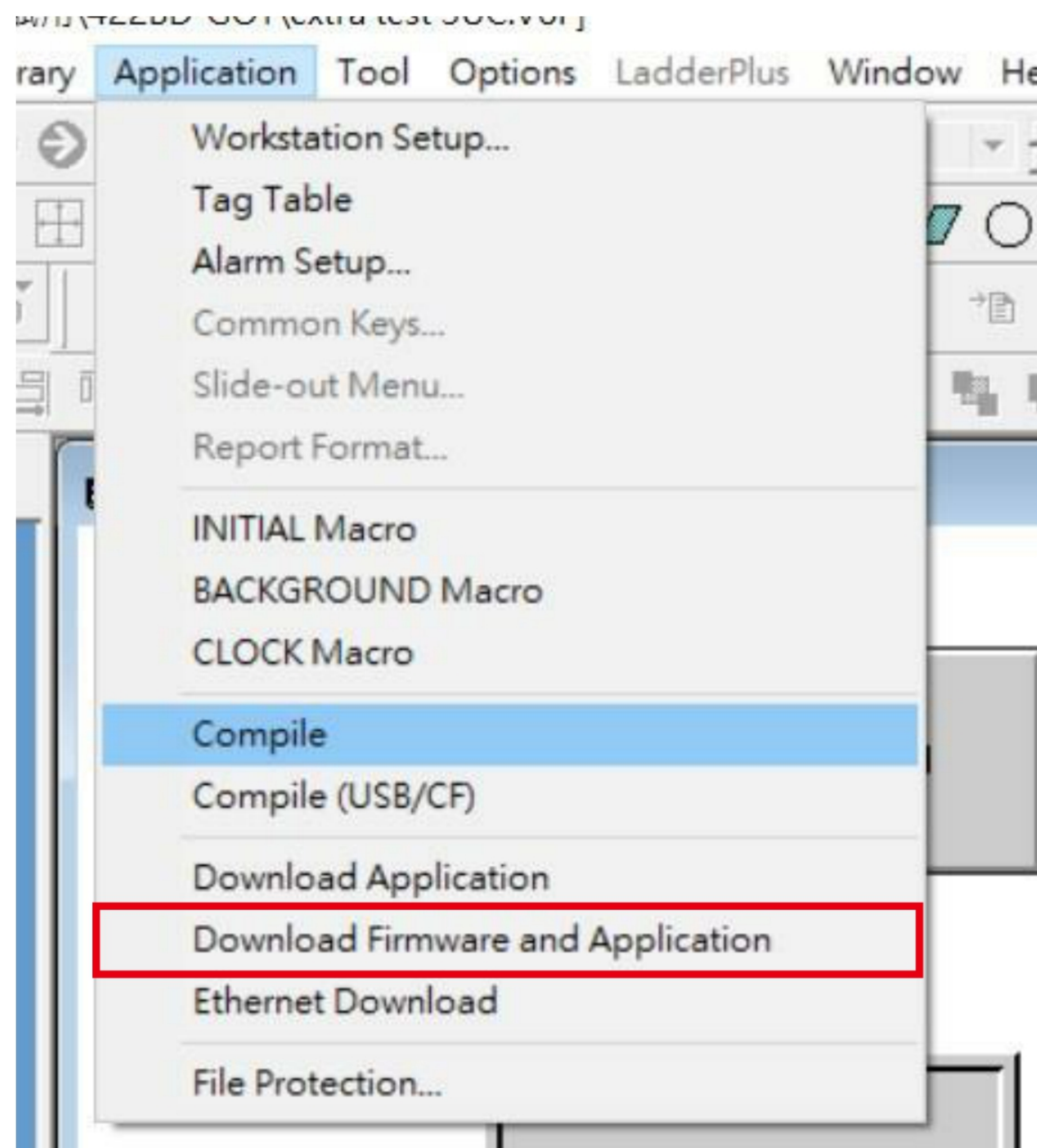
Parity: None

Stop Bit:1

8.請務必先進行編譯。



9.請下載韌體及應用。



Legal Disclaimer (must not be removed)

The contents of this document are provided as illustrative subject matter. No license, expressly or implied to any intellectual property rights is granted by this document. With regard to the products and services of Mitsubishi Electric referred to within this document, Mitsubishi Electric and its group companies assume no liability whatsoever and disclaim any express or implied warranty, relating to the use and/or sale of those products and services including liability or warranties relating to fitness for purpose, or infringement of any intellectual property right such as, but not limited to, patents, copyrights etc. except as provided by Mitsubishi Electric's terms and conditions of sale for those products and services.

All dates, figures, product specifications, service data, are based on Mitsubishi Electric's current understanding and are subject to change without notice. Due to copyright controls around the images used in this presentation on no account may any of the images be copied, extracted, edited or otherwise reused and disseminated separately. If you have any questions regarding this please contact Mitsubishi Electric Corporation, 2-7-3 Marunouchi, Chiyoda-Ku, Tokyo, Factory Automation Systems Group, Overseas Marketing Division, Promotion Group Manager.

Where forward looking statements and proposals are provided these are based on Mitsubishi Electric's current expectations and are subject to risks and uncertainties that affect their validity, for example , but not limited to;
the availability of information disclosed to Mitsubishi Electric
changes in the state of the general business and economic environment
effects triggered by changes in currency exchange rates and interest rates
the development and adoption of new technologies
the introduction and acceptance of new products and services

Other customers of Mitsubishi Electric may be listed within this documentation as illustrative examples, Mitsubishi Electric does not make any representations or endorsements of the products or services of those customers.

Mitsubishi Electric believe that an intrinsic part of building automation solutions is the ability to work with partners and third party company products, however, where such companies, their products and or services are referred to, Mitsubishi Electric does so in good faith but expressly does not make representations or warranties regarding their quality, reliability, functionality, compatibility or general suitability.

Such references to third party companies, products and services may change without notice.

Other names, trademarks, brands may be claimed as the property of others and as such are acknowledged.

Mitsubishi Electric, e-F@ctory, MELSEC, MELSERVO, FREQROL, MELFA, iQ Platform and their associated logos are trademarks of Mitsubishi Electric Corporation in Japan and/or other countries.

Copyright © 2022 Mitsubishi Electric Corporation.

All rights reserved.

It is not allowed to delete this disclaimer from the slide deck – the slide deck will be accompanied by an original version in PDF format for reference.